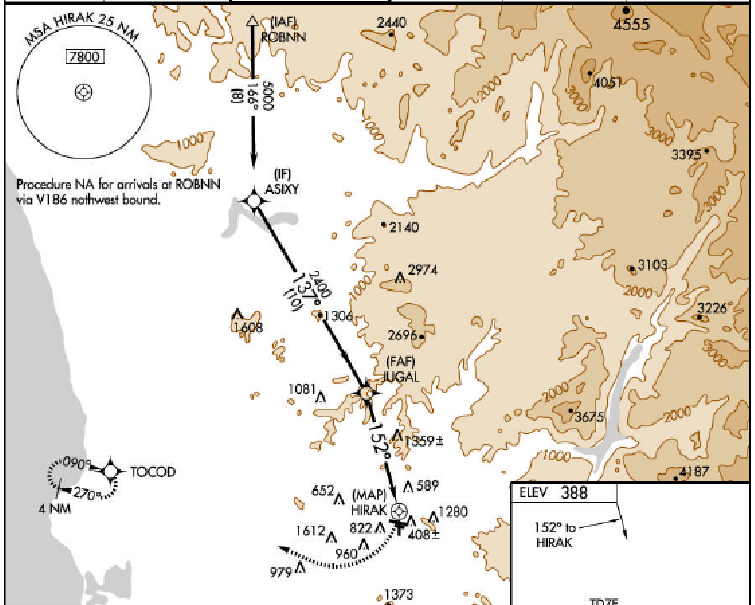


APP CRS 152°	Rwy Idg TDZE Apt Elev	3695 379 388
------------------------	-----------------------------	---

⚠ When local altimeter setting not received, use Miramar MCA5 altimeter setting and increase all MDA 40 feet.
Circling NA east of Rwy 17 and north of Rwy 27R.
When VGSi inoperative, procedure NA or night.
Visibility reduction by helicopters NA. DME/DME RNP-0.3 NA.

MISSED APPROACH: Climbing right turn to 3000 direct TOCOD and hold.

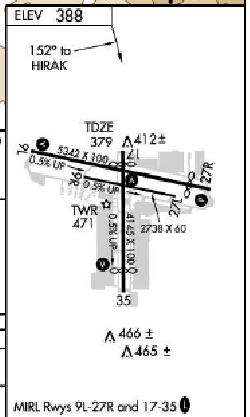
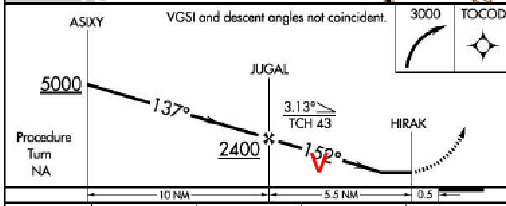
ATIS 125.45	SOCAL APP-CON 124.35 361.5	GILLESPIE TOWER* 120.7 (CTAF) 257.8	GND CON 121.7	CLNC DEL 125.1	UNICOM 123.05
-----------------------	--------------------------------------	---	-------------------------	--------------------------	-------------------------



KSAN RNAV (GPS) RWY 17

HAT ÷ 300 – Distance from Runway

$1261 \div 300 - 0.5 = 3.7$ Miles from HIRAK at 1640' MSL



CATEGORY	A	B	C	E
UNAV MDA	1640-1½ 1261 (1300-1½)	1640-1½ 1261 (1300-1½)	1640-3	1261 (1300-3)
CIRCLING	1640-1½ 1252 (1300-1½)	1640-1½ 1252 (1300-1½)	1640-3	1252 (1300-3)

KBUR VOR RWY 8

- HAT 613'

VDP 613 ÷ 300 = 2.04 Miles

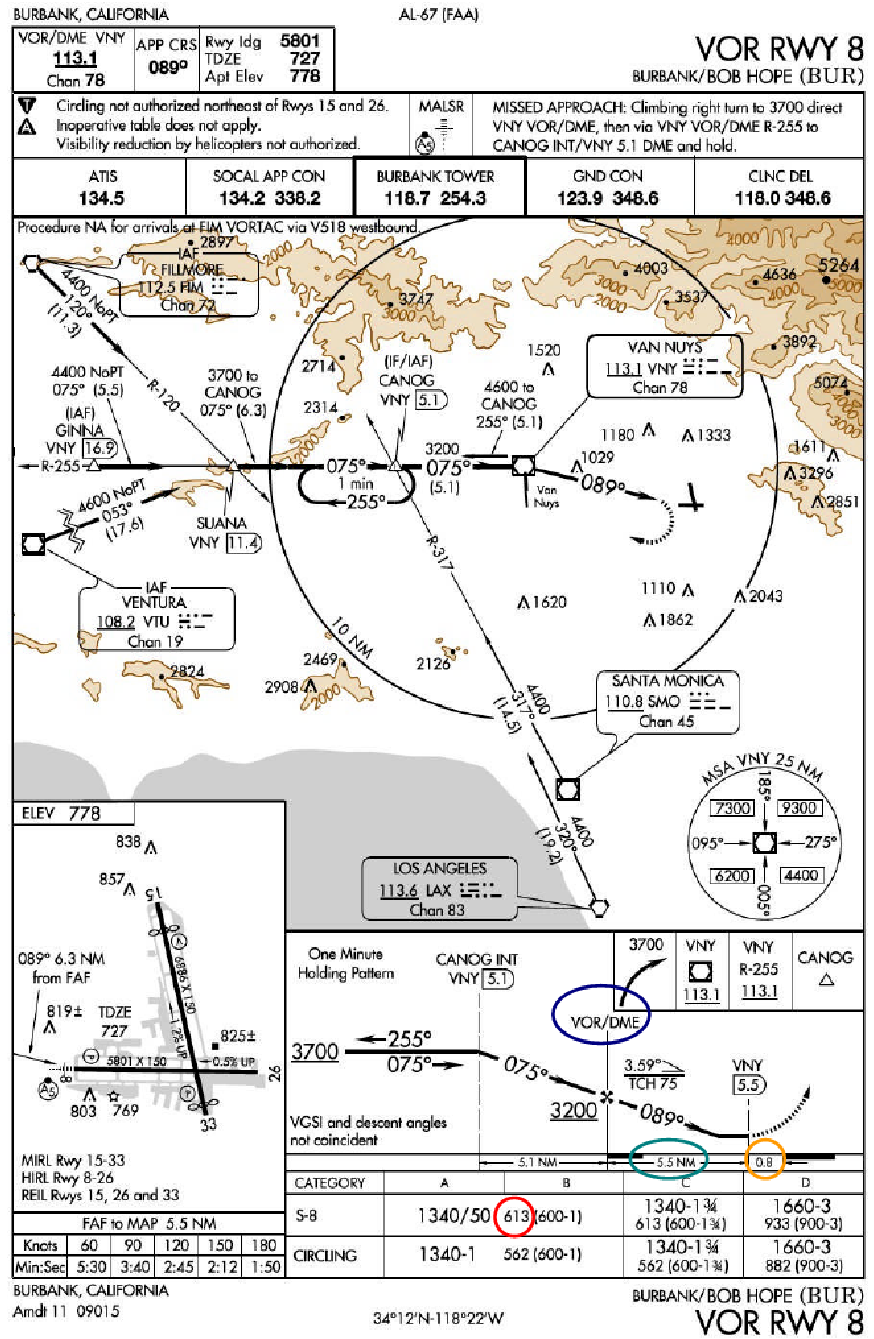
- MAP is offset from approach end of the runway 0.8 Miles

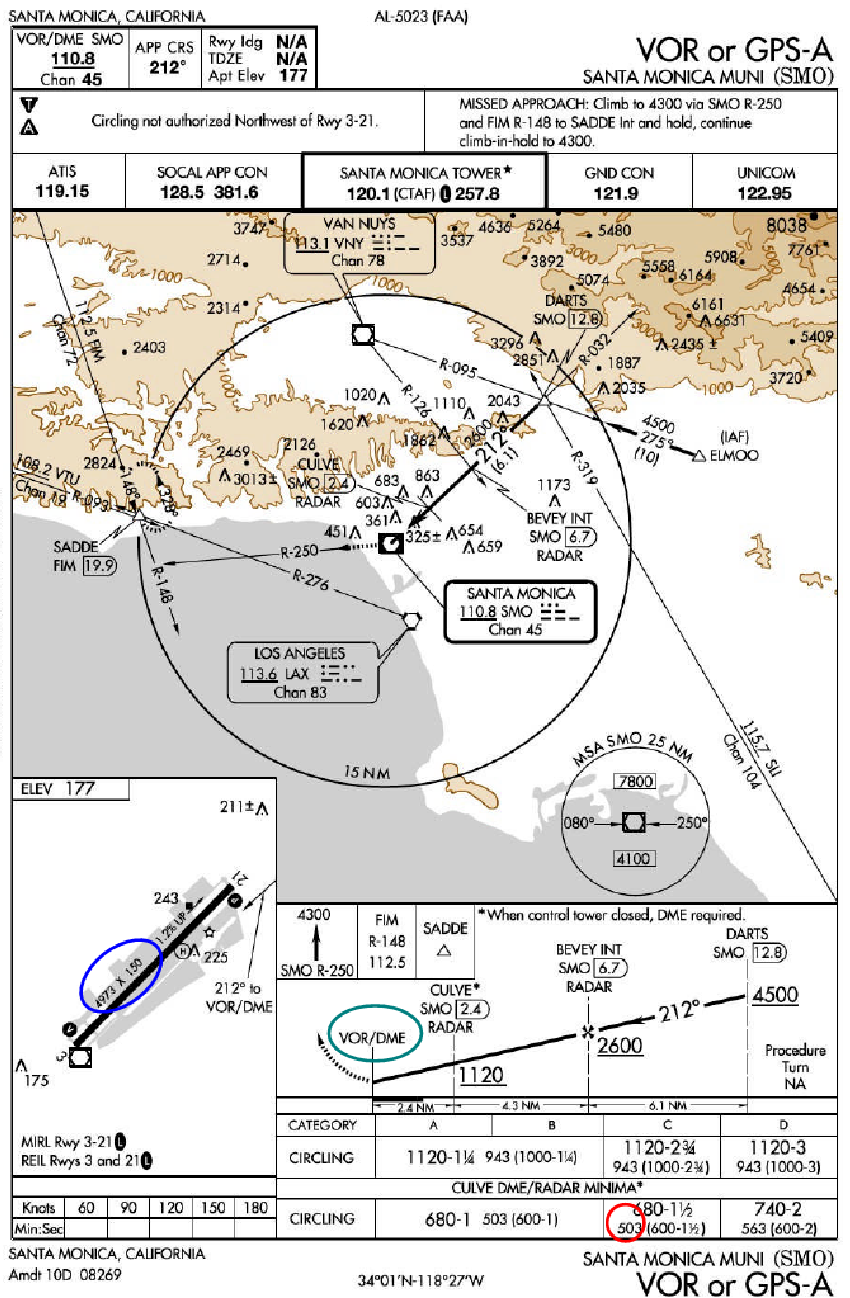
- Adjustment: 2.04 - 0.8 = 1.24 Miles from end of the runway.

VOR is 6.3 from end of runway.
(5.5 NM + 0.8)

6.3 - 2.04 = 4.26 from VNY
VOR for the VDP.

At the calculated VDP at the MDA,
the runway must be in sight and the
aircraft in position to make a normal
landing.





KSMO VOR or GPS-A

This is a circling approach, due to the MAP being on the departure end of the runway which does not allow a stabilized approach angle from the MAP to the runway. To figure the VDP you add the length of the runway to the calculated VDP to get the adjusted distance.

- HAA (Category C for Circling XL/XLS) 503'

$$503 \div 300 = 1.66 \text{ Miles.}$$

- Adjusted Runway Length 4973' is calculated using 6,076' per NM

$$4973 \div 6076 = 0.8 \text{ NM}$$

- VOR is at the Departure end of Runway

$$1.66 + 0.8 = 2.46$$

To make a stabilized (3.0°) approach to SMO Runway 21 the runway must be in sight and the aircraft in position to make a normal landing at 2.46 NM (2.5 DME) from the MAP/SMO VOR or the aircraft must circle to maneuver into a proper landing position.