



URGENT MESSAGE TO ALL AIRMEN OPERATING AT PDK

This message is intended for all airmen who plan to fly to or from Atlanta's DeKalb Peachtree Airport (PDK).

PDK has a high number of runway incursions, particularly pilot deviations. The common factor in most of these is the airmen that are not based at PDK. The airport has complex runway configurations with closely aligned taxiways, which can be confusing to unprepared pilots. All airport facilities and markings have been reviewed with the staff and determined to meet the level of safety required by current standards. However, in an effort to avoid future runway incursions and potential accidents, we urge pilots operating at PDK to:

- become totally aware of the airport hot spots (visit website at www.pdkairport.org);
- know exactly where on the ground you plan to go;
become very familiar with the airport diagram.
- ask for "progressive taxi instructions" from Ground control if you have any questions or concerns about finding your way;
- review all safety data associated with the airport including NOTAMs, ATIS, etc.; and,
- assess yourself to see if you are up to the task of operating at a high volume, complex and busy airport.

Please do your part to make operations as safe as possible for everyone operating into and out of PDK.

AIRPORT DIAGRAM

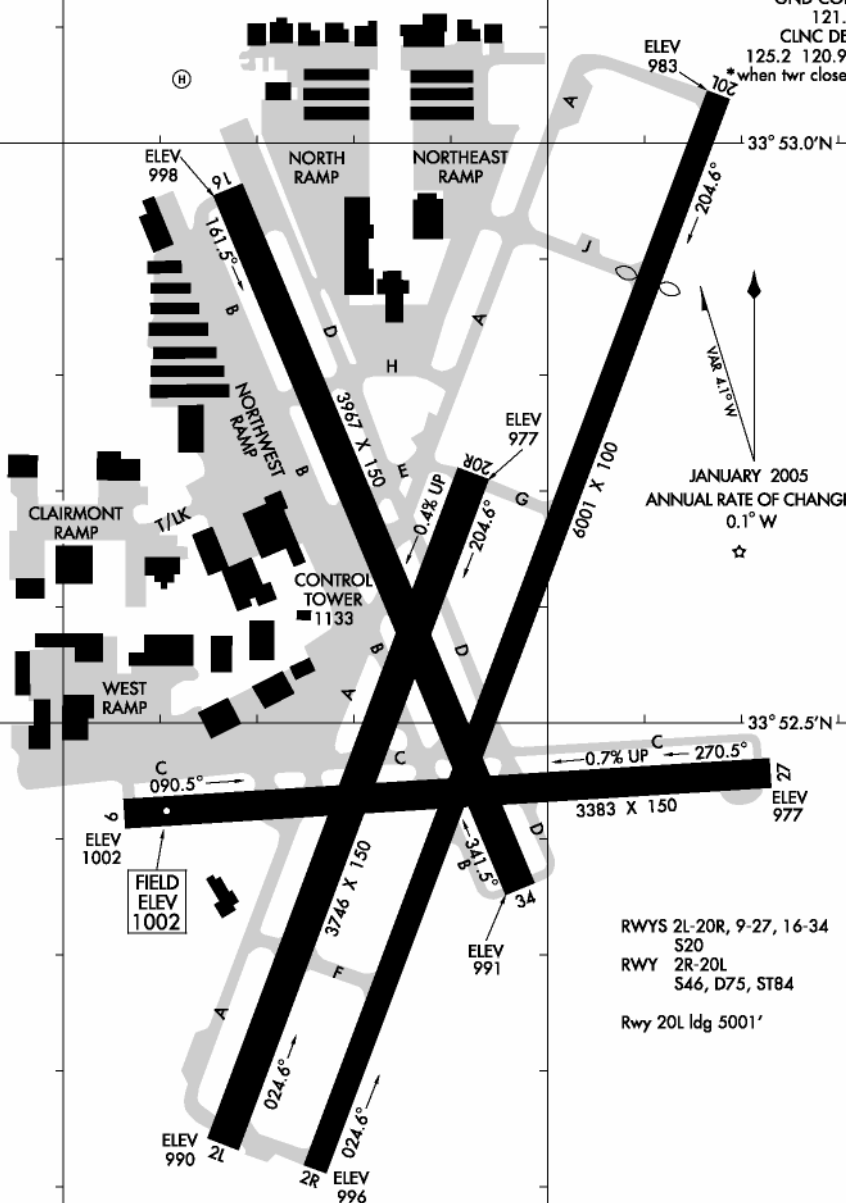
AL-469 (FAA)

ATLANTA/DEKALB-PEACHTREE (PDK)
ATLANTA, GEORGIA

84° 18.5'W

84° 18.0'W

ATIS 128.4
PEACHTREE TOWER*
120.9 281.5
GND CON
121.6
CLNC DEL
125.2 120.9*
when twr closed



CAUTION: BE ALERT TO RUNWAY CROSSING CLEARANCES.
READBACK OF ALL RUNWAY HOLDING INSTRUCTIONS IS REQUIRED.

RWYS 2L-20R, 9-27, 16-34
S20
RWY 2R-20L
S46, D75, ST84
Rwy 20L ldg 5001'

JANUARY 2005
ANNUAL RATE OF CHANGE
0.1° W

SE-4, 25 OCT 2007 to 22 NOV 2007

SE-4, 25 OCT 2007 to 22 NOV 2007

AIRPORT DIAGRAM

ATLANTA, GEORGIA
ATLANTA/DEKALB-PEACHTREE (PDK)