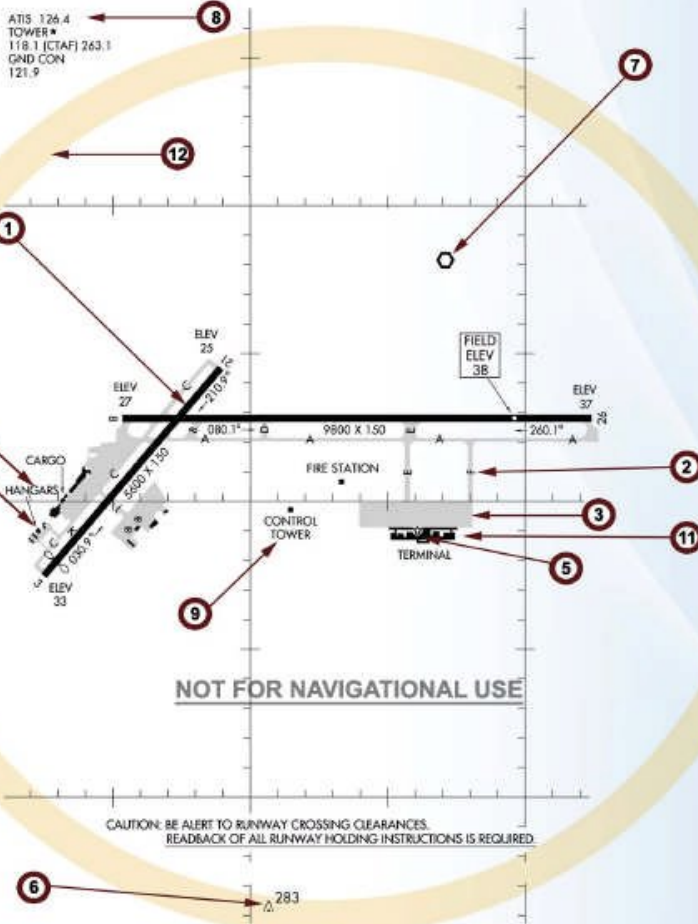


# The "D" NOTAM



## Keywords

## Explanations

Keywords	Explanations
<b>RWY</b>	<b>1</b> <b>RWY 3/21 CLSD</b> Runway 3 and Runway 21 is closed to aircraft
<b>TWY</b>	<b>2</b> <b>TWY F LGTS OTS</b> Taxiway F has its lights out of service
<b>RAMP</b>	<b>3</b> <b>RAMP TERMINAL EAST SIDE CONSTRUCTION</b> The ramp in front of the east side of the terminal has ongoing construction.
<b>APRON</b>	<b>4</b> <b>APRON SW TWY C NEAR HANGARS CLSD</b> The apron near the southwest taxiway C in front of the hangars is closed
<b>AD</b>	<b>5</b> <b>AD ABN OTS</b> The aerodromes airport beacon is out of service
<b>OBST</b>	<b>6</b> <b>OBST TOWER 283 (246 AGL) 22.2 S LGTS OTS (ASR 1065881) TIL 0707272300</b> An obstruction exists for a tower that is 283 feet above Mean Sea Level (MLS) or 246 feet Above Ground Level (AGL) 2.2 statute miles south of the field has its lights being reported out of service. The Antenna structure registration number (ASR) for this obstruction is 1065881 in the FCC database and this light will be returned to service at 2300 UTC (Universal Coordinated Time) on July 27, 2007.
<b>NAV</b>	<b>7</b> <b>NAV VOR OTS</b> Navigation, the VOR located on this airport is out of service
<b>COM</b>	<b>8</b> <b>COM ATIS OTS</b> Communications, The Automatic Terminal Information Service (ATIS) is out of service.
<b>SVC</b>	<b>9</b> <b>SVC TWR 1215-0330 MON-FRU/1430-2300 SAT/1600-0100 SUN TIL 0707300100</b> Services, the control tower has new operating hours, 1215-0300 UTC Monday Thru Friday, 1430-2300 UTC on Saturday, and 1600-0100 UTC on Sunday until 0100 UTC on July 30, 2007
	<b>10</b> <b>SVC FUEL UNAVBL TIL 0707291600</b> Services, all fuel for this airport is unavailable until July 29, 2007 at 1600 UTC
	<b>11</b> <b>SVC CUSTOMS UNAVBL TIL 0708150800</b> Services, United States Customs service for this airport will not be available until August 15, 2007 at 0800 UTC
<b>AIRSPACE</b>	<b>12</b> <b>AIRSPACE AIRSHOW ACFT 5000/BLW 5 NMR AIRPORT AVOIDANCE ADZD WEF 0707152000-0707152200</b> Airspace, There is an airshow being held at this airport with aircraft flying 5000 feet and below within a 5 nautical mile radius, avoidance is advised from 2000 UTC on July 15, 2007 until 2200 UTC on July 15, 2007

NOTE: All NOTAMs "D" will have a keyword at the beginning of the text of each NOTAM.

## NOTAMs Translated!

### A

ABN Airport Beacon  
ABV Above  
ACC Area Control Center (ARTCC)  
ACCUM Accumulate  
ACFT Aircraft  
ACR Air Carrier  
ACT Active  
ADJ Adjacent  
ADZD Advised  
AFD Airport Facility Directory  
AGL Above Ground Level  
ALS Approach Light System  
ALT Altitude  
ALTM Altimeter  
ALTN Alternate  
ALTNLY Alternately  
ALSTG Altimeter Setting  
AMDT Amendment  
AMGR Airport Manager  
AMOS Automatic Meteorological Observing System  
AP Airport  
APCH Approach  
AP LGT Airport Lights  
APP Approach Control  
ARFF Aircraft Rescue & Fire Fighting  
ARR Arrive, Arrival  
ASOS Automated Surface Observing System  
ASPH Asphalt  
ATC Air Traffic Control  
ATCSCC Air Traffic Control System Command Center  
ATIS Automatic Terminal Information Service  
AUTH Authority  
AUTOB Automatic Weather Reporting System  
AVBL Available  
AWOS Automatic Weather Observing/Reporting System  
AWY Airway  
AZM Azimuth

### B

BA FAIR Braking action fair  
BA NIL Braking action nil  
BA POOR Braking action poor  
BC Back Course  
BCN Beacon  
BERM Snowbank/s Containing Earth/Gravel  
BLW Below  
BND Bound  
BRG Bearing  
BYD Beyond

### C

CAAS Class A Airspace  
CAT Category  
CRAS Class B Airspace

### M

MAG Magnetic  
MAINT Maintain, maintenance  
MALS Medium Intensity Approach Light System  
MALSF Medium Intensity Approach Light System with Sequenced Flashers  
MALSR Medium Intensity Approach Light System with Runway Alignment Indicator Lights  
MAPT Missed Approach Point  
MCA Minimum Crossing Altitude  
MDA Minimum Descent Altitude  
MEA Minimum En Route Altitude  
MED Medium  
MIN Minute  
MIRL Medium Intensity Runway Lights  
MLS Microwave Landing System  
MM Middle Marker  
MNM Minimum  
MNT Monitor/Monitoring/Monitored  
MOC Minimum Obstruction Clearance  
MON Monday  
MRA Minimum reception altitude  
MSA Minimum Safe Altitude/Minimum Sector Altitude  
MSAW Minimum Safe Altitude Warning  
MSG Message  
MSL Mean Sea Level  
MU MU Meters  
MUD Mud  
MUNI Municipal

### N

N North  
NA Not Authorized  
NAV Navigation  
NB Northbound  
NDB Nondirectional Radio Beacon  
NE Northeast  
NGT Night  
NM Nautical Mile(s)  
NMR Nautical Mile Radius  
NONSTD Nonstandard  
NOPT No Procedure Turn Required  
NR Number  
NTAP Notice To Airmen Publication  
NW Northwest

### O

OBSC Obscured  
OBST Obstruction  
OM Outer Marker  
OPR Operate  
OPS Operation  
ORIG Original  
OTS Out of Service  
OVR Over

### P

CBSA	Class B Surface Area	PAEW	Personnel and Equipment Working
CCAS	Class C Airspace	PAPI	Precision Approach Path Indicator
CCLKWS	Counterclockwise	PAR	Precision Approach Radar
CCSA	Class C Surface Area	PARL	Parallel
CD	Clearance Delivery	PAT	Pattern
CDAS	Class D Airspace	PAX	Passenger
CDSA	Class D Surface Area	PCL	Pilot Controlled Lighting
CEAS	Class E Airspace	PERM	Permanent/Permanently
CESA	Class E Surface Area	PJE	Parachute Jumping Exercise
CFR	Code of Federal Regulations	PLA	Practice Low Approach
CGAS	Class G Airspace	PLW	Plow/Plowed
CHG	Change	PN	Prior Notice Required
CIG	Ceiling	PPR	Prior Permission Required
CK	Check	PREV	Previous
CL	Center line	PRN	Pseudo random noise
CLKWS	Clockwise	PROC	Procedure
CLR	Clearance, Clear(s), Cleared To	PROP	Propeller
CLSD	Closed	PSR	Packed Snow on Runway/s
CMB	Climb	PTCHY	Patchy
CMSND	Commissioned	PTN	Procedure Turn
CNL	Cancel	PVT	Private
COM	Communications	R	
CONC	Concrete	RAIL	Runway Alignment Indicator Lights
CPD	Coupled	RAMOS	Remote Automatic Meteorological Observing System
CRS	Course	RCAG	Remote Communication Air/Ground Facility
CTC	Contact	RCL	Runway Centerline
CTL	Control	RCLL	Runway Centerline Light System
D		RCO	Remote Communication Outlet
DALGT	Daylight	REC	Receive/Receiver
DCMSND	Decommissioned	RELCTD	Relocated
DCT	Direct	REIL	Runway End Identifier Lights
DEGS	Degrees	REP	Report
DEP	Depart/Departure	RLLS	Runway Lead-in Lights System
DEPPROC	Departure Procedures	RMNDR	Remainder
DH	Decision Height	RNAV	Area Navigation
DISABLD	Disabled	RPLC	Replace
DIST	Distance	RQRD	Required
DLA	Delay or Delayed	RRL	Runway Remaining Lights
DLT	Delete	RSR	En route Surveillance Radar
DLY	Daily	RSVN	Reservation
DME	Distance Measuring Equipment	RT	Right Turn
DMSTN	Demonstration	RTE	Route
DP	Dew Point Temperature	RTR	Remote Transmitter/Receiver
DRFT	Snowbank/s Caused By Wind Action	RTS	Return to Service
DSPLCD	Displaced	RUF	Rough
E		RVR	Runway Visual Range
E East		RVRM	Runway Visual Range Midpoint
EB	Eastbound	RVRR	Runway Visual Range Rollout
EFAS	En Route Flight Advisory Service	RVRT	Runway Visual Range Touchdown
ELEV	Elevation	RWY	Runway
ENG	Engine	S	
ENRT	En route	S South	
ENTR	Entire	SA	Sand, sanded
EXC	Except	SAT	Saturday
F		SAWR	Supplementary Aviation Weather Reporting Station
FAC	Facility or Facilities	SB	Southbound
FAF	Final Approach fix	SDF	Simplified Directional Facility
FAN MKR	Fan Marker	SF	Southeast
FDC	Flight Data Center		
FI/T	Flight Inspection Temporary		
FI/P	Flight Inspection Permanent		

FM	From	SFL	Sequence Flashing Lights
FREQ	Frequency	SID	Standard Instrument Departure
FNA	Final Approach	SIMUL	Simultaneous
FPM	Feet Per Minute	SIR	Packed or Compacted Snow and Ice on Runway/s
FREQ	Frequency	SKED	Scheduled
FRH	Fly Runway Heading	SLR	Slush on Runway/s
FRI	Friday	SN	Snow
FRZN	Frozen	SNBNK	Snowbank/s Caused by Plowing
FSS	Automated/Flight Service Station	SNGL	Single
FT	Foot, feet	SPD	Speed
G		SSALF	Simplified Short Approach Lighting System with Sequenced Flashers
GC	Ground Control	SSALR	Simplified Short Approach Lighting System with Runway Alignment Indicator Lights
GCA	Ground Control Approach	SSALS	Simplified Short Approach Lighting System
GOVT	Government	SSR	Secondary Surveillance Radar
GP	Glide Path	STA	Straight-in Approach
GPS	Global Positioning System	STAR	Standard Terminal Arrival
GRVL	Gravel	SUN	Sunday
H		SVC	Service
HAA	Height Above Airport	SW	Southwest
HAT	Height Above Touchdown	SWEPT	Swept or Broom/Broomed
HDG	Heading	T	
HEL	Helicopter	T	Temperature
HELI	Heliport	TAA	Terminal Arrival Area
HIRL	High Intensity Runway Lights	TACAN	Tactical Air Navigational Aid
HIWAS	Hazardous Inflight Weather Advisory Service	TAR	Terminal Area Surveillance Radar
HLDG	Holding	TDZ	Touchdown Zone
HOL	Holiday	TDZ LG	Touchdown Zone Lights
HP	Holding Pattern	TEMPO	Temporary
HR	Hour	TFC	Traffic
I		TFR	Temporary Flight Restriction
IAF	Initial approach fix	TGL	Touch and Go Landings
IAP	Instrument Approach Procedure	THN	Thin
INBD	Inbound	THR	Threshold
ID	Identification	THRU	Through
IDENT	Identify/Identifier/Identification	THU	Thursday
IF	Intermediate fix	TIL	Until
ILS	Instrument Landing System	TKOF	Takeoff
IM	Inner Marker	TM	Traffic Management
IMC	Instrument Meteorological Conditions	TMPA	Traffic Management Program Alert
IN	Inch/Inches	TRML	Terminal
INDEFLY	Indefinitely	TRNG	Training
INFO	Information	TRSN	Transition
INOP	Inoperative	TSNT	Transient
INSTR	Instrument	TUE	Tuesday
INT	Intersection	TWR	Tower
INTL	International	TWY	Taxiway
INTST	Intensity	U	
IR	Ice On Runway/s	UFN	Until Further Notice
K		UNAVBL	Unavailable
KT	Knots	UNLGTD	Unlighted
L		UNMKD	Unmarked
L	Left	UNMNT	Unmonitored
LAA	Local Airport Advisory	UNREL	Unreliable
LAT	Latitude	UNUSBL	Unusable
LAWRS	Limited Aviation Weather Reporting Station	V	
LB	Pound/Pounds	VASI	Visual Approach Slope Indicator
LC	Local Control	VDP	Visual Descent Point
LOC	Local/Locally/Location		
LOC	Located		

LDA Localizer Type Directional Aid  
LGT Light or Lighting  
LGTD Lighted  
LIRL Low Intensity Runway Lights  
LLWAS Low Level Wind Shear Alert System  
LM Compass Locator at ILS Middle Marker  
LDG Landing  
LLZ Localizer  
LO Compass Locator at ILS Outer Marker  
LONG Longitude  
LRN Loran  
LSR Loose Snow on Runway/s  
LT Left Turn

VGSI Visual Glide Slope Indicator  
VIA By Way Of  
VICE Instead/Versus  
VIS Visibility  
VMC Visual Meteorological Conditions  
VOL Volume  
VOR VHF Omni-Directional Radio Range  
VORTAC VOR and TACAN (colocated)  
W  
W West  
WB Westbound  
WED Wednesday  
WEF With Effect From or Effective From  
WI Within  
WIE With Immediate Effect or Effective Immediately  
WKDAYS Monday through Friday  
WKEND Saturday and Sunday  
WND Wind  
WPT Waypoint  
WSR Wet Snow on Runway/s  
WTR Water on Runway/s  
WX Weather

## METAR & TAF Weather Reports

### Weather Identifiers:

B - Began	FC, +FC Funnel Cloud, Well-Developed	HZ Haze	SA Sand
BC Patches	Funnel Cloud	IC Ice Crystals	SG Snow Grains
BL Blowing	Tornado or	MI Shallow	SH Showers
BR Mist	Waterspout	PE Ice Pellets	SN Snow
DR Low Drifting	FG Fog	PO Well-Developed Dust/Sand Whirls	SQ Squalls Moderate
DS Dust storm	FU Smoke	PR Partial	SS Sandstorm
DU Dust	FZ Freezing	PY Spray	TS Thunderstorm
DZ Drizzle	GR Hail	RA Rain	UP Unknown Precipitation
E - Ended	GS Small Hail or Snow Pellets (< 1/4)		VA Volcanic Ash
			VC In the Vicinity

**Modifiers:** - Light + Heavy P More than M Less than B Began E Ended

### Sky Conditions:

BKN – Broken cloud layer 5/8ths to 7/8ths	OVC – Overcast cloud layer 8/8ths coverage
CB – Cumulonimbus	SCT – Scattered cloud layer 3/8ths to 4/8ths
CLR – Sky clear at or below 12,000AGL	SKC – Sky Clear
FEW – Few cloud layer 0/8ths to 2/8ths	TCU – Towering Cumulus

### Other:

A01 – Automated Observation without precipitation discrimination	PROB40 – Probability of 40%
A02 – Automated Observation with precipitation discrimination	R04 – Runway 4
A3000 – Altimeter setting 30.00"	RMK – Remarks
AMD – Amended forecast	RWY – Runway
AUTO – without human editing	RVRNO – Runway Visual Range not available
BECMG – Becoming... BECMG 0002 = becoming 00 to 02 Zulu	SFC VIS – Surface Visibility
CAVU – Ceiling and visibility unlimited	SLP – Sea Level Pressure, add 10 to numbers given
COR – Correction	SLPNO – Sea Level Pressure not available
DSNT – Distant weather phenomenon	SM – Statute miles
FM – From... FM0200 = from 0200 Zulu	SPECI – Special Report
FROPA – Frontal Passage	TEMPO – Temporarily... TEMPO 0002 = Temporarily 00 to 02 Zulu
LDG – Landing	T02560179 – Temperature 25.6 dew point 17.9
M – Minus, below zero, "less than"	TWR VIS – Tower Visibility
NO – Not available	V – Varying
NSW – No significant weather	VRB – Variable
P6SM – Plus 6 Statute Miles, greater than, "more than"	VRB VIS – Variable Visibility
PK WND – Peak Wind	VV – Vertical Visibility, indefinite ceiling
PRESFR/PRESRR – Pressure Falling or Rising Rapidly	WS – Wind shear
	WSHFT - Wind shift

## Area Forecast Weather Reports

**AAF** - Army Air Field  
**AAL** - above aerodrome level  
**AATM** - at all times  
**ABD** - aboard  
**ABNDT** - abundant  
**ABNML** - abnormal  
**ABT** - about  
**ABV** - above  
**AC** - altocumulus  
**ACARS** - Aircraft communication addressing & reporting system  
**ACCUM** - accumulate  
**ACFT** - aircraft  
**ACK** - acknowledge  
**ACL** - altimeter check location  
**ACLD** - above clouds  
**ACLT** - accelerate  
**ACPT** - accept  
**ACR** - air carrier  
**ACRBT** - acrobatic  
**ACRS** - across  
**ACSL** - standing lenticular altocumulus  
**ACT** - active or activated or activity  
**ACTG** - acting  
**ACTV** - active  
**ACTVT** - activate  
**ACYC** - anticyclonic  
**ADA** - advisory area  
**ADDN** - addition  
**ADF** - automatic direction finder  
**ADIZ** - air defense identification zone  
**ADJ** - adjacent  
**ADQT** - adequate  
**ADRNDCK** - adirondack  
**ADV** - advise  
**ADVCTN** - advection  
**ADVN** - advance  
**ADVY** - advisory  
**ADVZY** - advisory  
**AFB** - Air Force Base  
**AFCT** - affect  
**AFD** - Airport/Facility Directory  
**AFDK** - after dark  
**AFSS** - Automated Flight Service Station  
**AFT** - after  
**AFTN** - afternoon  
**AGL** - above ground level  
**AHD** - ahead  
**AIM** - Aeronautical Information Manual

**GEOREF** - Geographical reference  
**GF** - Ground fog  
**GICG** - Glaze icing  
**GLFALSK** - Gulf of Alaska  
**GLFCAL** - Gulf of California  
**GLFMEX** - Gulf of Mexico  
**GLFSTLAWR** - Gulf of St. Lawrence  
**GND** - Ground  
**GNDFG** - Ground fog  
**GRAD** - Gradient  
**GRDL** - Gradual  
**GRDLY** - Gradually  
**GRT** - Great  
**GRTLY** - Greatly  
**GRTR** - Greater  
**GRTST** - Greatest  
**GRTLKS** - Great Lakes  
**GSTS** - Gusts  
**GSTY** - Gusty  
**GV** - Ground visibility

**H**  
**HAZ** - Hazard  
**HCVIS** - High clouds visible  
**HDFRZ** - Hard freeze  
**HDSVLY** - Hudson Valley  
**HDWND** - Head wind  
**HGT** - Height  
**HI** - High  
**HIER** - Higher  
**HIFOR** - High level forecast  
**HLF** - Half  
**HLTP** - Hilltop  
**HLSTO** - Hailstones  
**HLYR** - Haze layer aloft  
**HND** - Hundred  
**HR** - Hour  
**HRS** - Hours  
**HRZN** - Horizon  
**HTG** - Heating  
**HURCN** - Hurricane  
**HUREP** - Hurricane report  
**HV** - Have  
**HVY** - Heavy  
**HVYR** - Heavier  
**HVYST** - Heaviest  
**HWVR** - However  
**HWY** - Highway

**I**  
**IA** - Iowa  
**IC** - Ice  
**ICG** - Icing  
**ICGIC** - Icing in clouds

**RLBL** - Reliable  
**REPL** - Replace  
**REPLD** - Replaced  
**REPLG** - Replacing  
**REPLS** - Replaces  
**REQ** - Request  
**REQS** - Requests  
**REQSTD** - Requested  
**RESP** - Response  
**RESTR** - Restrict  
**RGD** - Ragged  
**RGLR** - Regular  
**RGN** - Region  
**RGNS** - Regions  
**RH** - Relative Humidity  
**RIOGD** - Rio Grande  
**RLTV** - Relative  
**RLTVLY** - Relatively  
**RMN** - Remain  
**RMND** - Remained  
**RMNDR** - Remainder  
**RMNG** - Remaining  
**RMNS** - Remains  
**RNFL** - Rainfall  
**ROT** - Rotate  
**ROTD** - Rotated  
**ROTG** - Rotating  
**ROTS** - Rotates  
**RPD** - Rapid  
**RPDLY** - Rapidly  
**RPLC** - Replace  
**RPLCD** - Replaced  
**RPLCG** - Replacing  
**RPLCS** - Replaces  
**RPRT** - Report  
**RPRTD** - Reported  
**RPRTG** - Reporting  
**RPRTS** - Reports  
**RPT** - Repeat  
**RPTG** - Repeating  
**RPTS** - Repeats  
**RQR** - Require  
**RQRD** - Required  
**RQRG** - Requiring  
**RQRS** - Requires  
**RS** - Receiver station  
**RSG** - Rising  
**RSN** - Reason  
**RSNG** - Reasoning  
**RSNS** - Reasons  
**RSTR** - Restrict  
**RSTRD** - Restricted  
**RSTRG** - Restricting  
**RSTRS** - Restricts  
**RTRN** - Return  
**RTRND** - Returned

**AIRMET** - Airmen's Meteorological Information  
**ALF** - aloft  
**ALG** - along  
**ALGHNY** - Allegheny  
**ALNMT** - alignment  
**ALQDS** - all quadrants  
**ALS** - approach light system  
**ALSEC** - all sectors  
**ALSF-1** - standard 2400' high-intensity approach lighting system with sequenced flashers (Category I configuration)  
**ALSF-2** - standard 2400' high-intensity approach lighting system with sequenced flashers (Category II configuration)  
**ALSTG** - altimeter setting  
**ALT** - altitude  
**ALTA** - Alberta  
**ALTM** - altimeter  
**ALTN** - alternate  
**ALUTN** - Aleutian  
**AM** - ante meridiem  
**AMS** - air mass  
**AMSL** - above mean sea level  
**ANCPT** - anticipate  
**ANLYS** - analysis  
**AO1** - ASOS automated observation without precipitation discriminator (rain/snow)  
**AO2** - ASOS automated observation with precipitation discriminator (rain/snow)  
**AOA** - at or above  
**AOB** - at or below  
**AOE** - airport of entry  
**APCH** - approach  
**APL** - airport lights  
**APLCN** - Appalachian  
**APN** - Apron  
**APRNT** - apparent  
**APROP** - appropriate  
**APRX** - approximate  
**ARB** - Air Reserve Base  
**ARFOR** - area forecast  
**ARINC** - Aeronautical Radio, Incorporated  
**ARND** - around  
**ARTC** - air route traffic control  
**ARTCC** - Air Route Traffic Control Center  
**AS** - altostratus  
**ASAP** - as soon as possible  
**ASDA** - accelerate-stop distance available  
**ASL** - above sea level  
**ASOS** - automated surface observing system

**ICGIP** - Icing in precipitation  
**ID** - Idaho  
**IL** - Illinois  
**IMDT** - Immediate  
**IMDTLY** - Immediately  
**IMPL** - Impulse  
**IMPLS** - Impulses  
**IMPT** - Important  
**INCL** - Include  
**INCLD** - Included  
**INCLG** - Including  
**INCLS** - Includes  
**INCR** - Increase  
**INCRD** - Increased  
**INCRG** - Increasing  
**INCRGLY** - Increasingly  
**INCRS** - Increases  
**INDC** - Indicate  
**INDCD** - Indicated  
**INDCG** - Indicating  
**INDCS** - Indicates  
**INDEF** - Indefinite  
**INFO** - Information  
**INLD** - Inland  
**INSTBY** - Instability  
**INTCNTL** - Intercontinental  
**INTL** - International  
**INTMD** - Intermediate  
**INTMT** - Intermittent  
**INTMTLY** - Intermittently  
**INTR** - Interior  
**INTRMTRGN** - Intermountain region  
**INTS** - Intense  
**INTSFCN** - Intensification  
**INTSFY** - Intensify  
**INTSFYD** - Intensified  
**INTSFYG** - Intensifying  
**INTSFYS** - Intensifies  
**INTSTY** - Intensity  
**INTVL** - Interval  
**INVRN** - Inversion  
**IOVC** - In overcast  
**INVOF** - In vicinity of  
**IP** - Ice pellets  
**IPV** - Improve  
**IPVG** - Improving  
**IR** - Infrared  
**ISOL** - Isolate  
**ISOLD** - Isolated

**J**  
**JCTN** - Junction  
**JTSTR** - Jet stream

**K**  
**KFRST** - Killing frost  
**KLYR** - Smoke layer aloft  
**KOCTY** - Smoke over city  
**KS** - Kansas

**RTRNG** - Returning  
**RTRNS** - Returns  
**RUF** - Rough  
**RUFLY** - Roughly  
**RVS** - Revise  
**RVSD** - Revised  
**RVSG** - Revising  
**RVSS** - Revises  
**RW** - Rain shower

**S**  
**S** - South  
**SA** - Surface observation  
**SAO** - Surface observation  
**SAOS** - Surface observations  
**SASK** - Saskatchewan  
**SATFY** - Satisfactory  
**SBND** - South bound  
**SBSD** - Subside  
**SBSDD** - Subsided  
**SBSDNC** - Subsidence  
**SBSDS** - Subsides  
**SC** - South Carolina  
**SCND** - Second  
**SCNDRY** - Secondary  
**SCSL** - Standing lenticular stratocumulus  
**SCT** - Scatter  
**SCTD** - Scattered  
**SCTR** - Sector  
**SD** - South Dakota  
**SE** - Southeast  
**SEC** - Second  
**SELS** - Severe Local Storms Unit  
**SELY** - Southeasterly  
**SEPN** - Separation  
**SEQ** - Sequence  
**SERN** - Southeastern  
**SEWD** - Southeastward  
**SFC** - Surface  
**SFERICS** - Atmospheric  
**SG** - Snow grains  
**SGFNT** - Significant  
**SGFNTLY** - Significantly  
**SHFT** - Shift  
**SHFTD** - Shifted  
**SHFTG** - Shifting  
**SHFTS** - Shifts  
**SHLD** - Shield  
**SHLW** - Shallow  
**SHRT** - Short  
**SHRTLY** - Shortly  
**SHRTWV** - Shortwave  
**SHRTWVS** - Shortwaves  
**SHUD** - Should  
**SHWR** - Shower  
**SHWRS** - Showers  
**SIERNEV** - Sierra Nevada  
**SIG** - Signature  
**SIGMET** - Significant

**ASPH** - asphalt  
**ATA** - actual time of arrival  
**ATIS** - automatic terminal information service  
**ATLC** - Atlantic  
**AURBO** - Aurora Borealis  
**AUTH** - authorized  
**AUTO** - automatic  
**AVG** - average  
**AVGAS** - aviation gasoline  
**AWOS** - automatic weather observing/reporting system  
**AWY** - airway  
**AZM** - azimuth  
**BACLIN** - Baroclinic  
**BAJA** - Baja California  
**BATROP** - Barotropic  
**BC** - British Columbia  
**BCH** - Beach  
**BCKG** - Backing  
**BCM** - Become  
**BCMG** - Becoming  
**BCMS** - Becomes  
**BD** - Blowing dust  
**BDA** - Bermuda  
**BDRY** - Boundary  
**BFDK** - Before dark  
**BFR** - Before  
**BGN** - Begin  
**BGNG** - Beginning  
**BGNS** - Begins  
**BHND** - Behind  
**BINOVC** - Breaks in overcast  
**BKN** - Broken  
**BLD** - Build  
**BLDG** - Building  
**BLDS** - Builds  
**BLDUP** - Buildup  
**BLKHLS** - Black Hills  
**BLKT** - Blanket  
**BLKTG** - Blanketing  
**BLKTS** - Blankets  
**BLO** - Below  
**BLZD** - Blizzard  
**BN** - Blowing sand  
**BND** - Bound  
**BNDRY** - Boundary  
**BNDRYS** - Boundaries  
**BNTH** - Beneath  
**BOOTHEEL** - Bootheel  
**BR** - Branch  
**BRG** - Branching  
**BRS** - Branches  
**BRF** - Brief  
**BRK** - Break  
**BRKG** - Breaking  
**BRKHIC** - Breaks in higher clouds  
**BRKS** - Breaks  
**BRKSHR** - Berkshire  
**BRKSHRS** - Berkshires

**KT** - Knots  
**KY** - Kentucky  
  
L  
**LA** - Louisiana  
**LABRDR** - Labrador  
**LAT** - Latitude  
**LCL** - Local  
**LCLY** - Locally  
**LCTD** - Located  
**LCTN** - Location  
**LCTMP** - Little change in temperature  
**LEVEL** - Level  
**LFM** - Limited Fine Mesh Model  
**LFTG** - Lifting  
**LGRNG** - Long range  
**LGT** - Light  
**LGTR** - Lighter  
**LGWV** - Long wave  
**LI** - Lifted Index  
**LIS** - Lifted indices  
**LK** - Lake  
**LKS** - Lakes  
**LKLY** - Likely  
**LLJ** - Low Level Jet  
**LLWS** - Low Level Wind Shear  
**LLWAS** - Low level wind shear alert system  
**LMTD** - Limited  
**LMTG** - Limiting  
**LMTS** - Limits  
**LN** - Line  
**LN** - Lines  
**LO** - Low  
**LONG** - Longitude  
**LONGL** - Longitudnal  
**LRG** - Large  
**LRGLY** - Largely  
**LRGR** - Larger  
**LRGST** - Largest  
**LST** - Local standard time  
**LTD** - Limited  
**LTG** - Lightning  
**LTGCC** - Lightning cloud-to-cloud  
**LTGCCG** - Lightning cloud-to-ground  
**LTGCCCG** - Lightning cloud-to-cloud cloud-to-ground  
**LTGCW** - Lightning cloud-to-water  
**LTGIC** - Lightning in cloud  
**LTL** - Little  
**LTLCG** - Little change  
**LTR** - Later  
**LTST** - Latest  
**LV** - Leaving  
**LVL** - Level

**SIGMET** - Significant meteorological information  
**SIMUL** - Simultaneous  
**SKC** - Sky clear  
**SKED** - Schedule  
**SLD** - Solid  
**SLGT** - Slight  
**SLGTLY** - Slightly  
**SLO** - Slow  
**SLOLY** - Slowly  
**SLOR** - Slower  
**SLP** - Slope  
**SLPG** - Sloping  
**SLT** - Sleet  
**SLY** - Southerly  
**SM** - Statute mile  
**SMK** - Smoke  
**SML** - Small  
**SMLR** - Smaller  
**SMRY** - Summary  
**SMS** - Synchronus meteorological satellite  
**SMTH** - Smooth  
**SMTHR** - Smoother  
**SMTHST** - Smoothest  
**SMTM** - Sometime  
**SMWHT** - Somewhat  
**SNBNK** - Snow bank  
**SND** - Sand  
**SNFLK** - Snow flake  
**SNGL** - Single  
**SNOINCR** - Snow increase  
**SNOINCRG** - Snow increasing  
**SNST** - Sunset  
**SNW** - Snow  
**SNWFL** - Snowfall  
**SOP** - Standard operating procedure  
**SP** - Snow pellets  
**SPCLY** - Especially  
**SPD** - Speed  
**SPDS** - Speeds  
**SPENES** - Satellite precipitation estimate statement  
**SPKL** - Sprinkle  
**SPKLS** - Sprinkles  
**SPLNS** - Southern Plains  
**SPRD** - Spread  
**SPRDG** - Spreading  
**SPRDS** - Spreads  
**SPRL** - Spiral  
**SQAL** - Squall  
**SQLN** - Squall line  
**SR** - Sunrise  
**SRN** - Southern  
**SRND** - Surround  
**SRNDD** - Surrounded  
**SRNDG** - Surrounding  
**SRNDS** - Surrounds  
**SS** - Sunset  
**SSF** - South-southeast

**BRM** - Barometer  
**BS** - Blowing snow

**BTWN** - Between  
**BYD** - Beyond

**C**

**C** - Celsius

**CA** - California

**CAA** - Cold Air Advection

**CARIB** - Caribbean

**CASCDS** - Cascades

**CAVOK** - Ceiling and visibility

**OK**

**CAVU** - Ceiling and visibility  
unlimited

**CB** - Cumulonimbus

**CBS** - Cumulonimbi

**CC** - Cirrocumulus

**CCLDS** - Clear of clouds

**CCLKWS** - Counter-clockwise

**CCSL** - Standing lenticular

cirrocumulus

**CDFNT** - Cold front

**CDFNTL** - Cold frontal

**CFP** - Cold front passage

**CG** - Cloud-to-ground

**CHC** - Chance

**CHCS** - Chances

**CHG** - Change

**CHGD** - Changed

**CHGG** - Changing

**CHGS** - Changes

**CHSPK** - Cheseapeake

**CI** - Cirrus

**CIG** - Ceiling

**CIGS** - Ceilings

**CLD** - Cloud

**CLDNS** - Cloudiness

**CLDS** - Clouds

**CLKWS** - Clockwise

**CLR** - Clear

**CLRG** - Clearing

**CLRS** - Clears

**CMPLX** - Complex

**CNCL** - Cancel

**CNCLD** - Cancelled

**CNCLG** - Cancelling

**CNCLS** - Cancels

**CNDN** - Canadian

**CNTR** - Center

**CNTRD** - Centered

**CNTRLN** - Centerline

**CNTRS** - Centers

**CNTRL** - Central

**CNTY** - County

**CNTYS** - Counties

**CNVG** - Converge

**CNVGG** - Converging

**CNVGNC** - Convergence

**CNVTN** - Convection

**LVL** - Level

**LVLS** - Levels

**LWR** - Lower

**LWRD** - Lowered

**LWRG** - Lowering

**LYR** - Layer

**LYRD** - Layered

**LYRS** - Layers

**M**

**MA** - Massachusetts

**MAN** - Manitoba

**MAX** - Maximum

**MB** - Millibars

**MCD** - Mesoscale discussion

**MD** - Maryland

**MDFY** - Modify

**MDFYD** - Modified

**MDFYG** - Modifying

**MDL** - Model

**MDLS** - Models

**MDT** - Moderate

**MDTLY** - Moderately

**ME** - Maine

**MED** - Medium

**MEGG** - Merging

**MESO** - Mesoscale

**MET** - Meteorological

**METRO** - Metropolitan

**MEX** - Mexico

**MHKVLY** - Mohawk Valley

**MI** - Michigan

**MID** - Middle

**MIDN** - Midnight

**MIL** - Military

**MIN** - Minimum

**MISG** - Missing

**MLTLVL** - Melting level

**MN** - Minnesota

**MNLND** - Mainland

**MNLY** - Mainly

**MO** - Missouri

**MOGR** - Moderate or greater

**MOV** - Move

**MOVD** - Moved

**MOVG** - Moving

**MOVMT** - Movement

**MOVS** - Moves

**MPH** - Miles per hour

**MRGL** - Marginal

**MRGLLY** - Marginally

**MRNG** - Morning

**MRTM** - Maritime

**MS** - Mississippi

**MSG** - Message

**MSL** - Mean sea level

**MST** - Most

**MSTLY** - Mostly

**MSTR** - Moisture

**MT** - Montana

**SSELY** - South-southeasterly

**SSERN** - South-southeastern

**SSEWD** - South-southeastward

**SSW** - South-southwest

**SSWLY** - South-southwesterly

**SSWRN** - South-southwestern

**SSWWD** - South-

southwestward

**ST** - Stratus

**STAGN** - Stagnation

**STBL** - Stable

**STBLTY** - Stability

**STD** - Standard

**STDY** - Steady

**STFR** - Stratus fractus

**STFRM** - Stratiform

**STG** - Strong

**STGLY** - Strongly

**STGR** - Stronger

**STGST** - Strongest

**STLT** - Satellite

**STM** - Storm

**STMS** - Storms

**STN** - Station

**STNS** - Stations

**STNRY** - Stationary

**SUB** - Substitute

**SUBTRPCL** - Subtropical

**SUF** - Sufficient

**SUFLY** - Sufficiently

**SUG** - Suggest

**SUGG** - Suggesting

**SUGS** - Suggests

**SUP** - Supply

**SUPG** - Supplying

**SUPR** - Superior

**SUPS** - Supplies

**SUPSD** - Supersede

**SUPSDG** - Superseding

**SUPSDS** - Supersedes

**SVG** - Serving

**SVR** - Severe

**SVRL** - Several

**SW** - Southwest

**SWD** - Southward

**SWWD** - Southwestward

**SW-** - Light snow shower

**SW+** - Heavy snow shower

**SWLG** - Swelling

**SWLY** - Southwesterly

**SWOMCD** - SELS Mesoscale

Discussion

**SWRN** - Southwestern

**SX** - Stability index

**SXN** - Section

**SXNS** - Sections

**SYNOP** - Synoptic

**SYNS** - Synopsis

**SYS** - System

**CNVTV** - Convective  
**CNVTVLY** - Convectively  
**CNFDC** - Confidence  
**CO** - Colorado  
**COMPAR** - Compare  
**COMPARG** - Comparing  
**COMPARD** - Compared  
**COMPARS** - Compares  
**COND** - Conditions  
**CONT** - Continue  
**CONTD** - Continued  
**CONTLY** - Continually  
**CONTG** - Continuing  
**CONTRAILS** - Condensation Trails  
**CONTS** - Continues  
**CONTDVD** - Continental Divide  
**CONUS** - Continental U.S.  
**COORD** - Coordinate  
**COR** - Correction  
**CPBL** - Capable  
**CRC** - Circle  
**CRCLC** - Circulate  
**CRCLN** - Circulation  
**CRNR** - Corner  
**CRNRS** - Corners  
**CRS** - Course  
**CS** - Cirrostratus  
**CSDR** - Consider  
**CSDRBL** - Considerable  
**CST** - Coast  
**CSTL** - Coastal  
**CT** - Connecticut  
**CTGY** - Category  
**CTSKLS** - Catskills  
**CU** - Cumulus  
**CUFRA** - Cumulus Fractus  
**CVR** - Cover  
**CVRD** - Covered  
**CVRG** - Covering  
**CVRS** - Covers  
**CYC** - Cyclonic  
**CYCLGN** - Cyclogenesis  
**D**  
**DABRK** - Daybreak  
**DALGT** - Day light  
**DBL** - Double  
**DC** - District of Columbia  
**DCR** - Decrease  
**DCRD** - Decreased  
**DCRG** - Decreasing  
**DCRGLY** - Decreasingly  
**DCRS** - Decreases  
**DE** - Delaware  
**DEG** - Degree  
**DEGS** - Degrees  
**DELMARVA** - Delaware-Maryland-Virginia  
**DFCLT** - Difficult  
**DFCLTY** - Difficulty

**MTN** - Mountain  
**MTNS** - Mountains  
**MULT** - Multiple  
**MULTILVL** - Multi-level  
**MXD** - Mixed  
**N**  
**N** - North  
**NAB** - Not above  
**NAT** - North Atlantic  
**NATL** - National  
**NAV** - Navigation  
**NB** - New Brunswick  
**NBND** - Northbound  
**NBRHD** - Neighborhood  
**NC** - North Carolina  
**NCWX** - No change in weather  
**ND** - North Dakota  
**NE** - Northeast  
**NEB** - Nebraska  
**NEC** - Necessary  
**NEG** - Negative  
**NEGLY** - Negatively  
**NELY** - Northeasterly  
**NERN** - Northeastern  
**NEWD** - Northeastward  
**NEW ENG** - New England  
**NFLD** - Newfoundland  
**NGM** - Nested Grid Model  
**NGT** - Night  
**NH** - New Hampshire  
**NIL** - None  
**NJ** - New Jersey  
**NL** - No layers  
**NLT** - Not later than  
**NLY** - Northerly  
**NM** - New Mexico  
**NMBR** - Number  
**NMBRS** - Numbers  
**NMC** - National Meteorological Center  
**NML** - Normal  
**NMRS** - Numerous  
**NNE** - North-northeast  
**NNELY** - North-northeasterly  
**NNERN** - North-northeastern  
**NNEWD** - North-northeastward  
**NNW** - North-northwest  
**NNWLY** - North-northwesterly  
**NNWRN** - North-northwestern  
**NNWWD** - North-northwestward  
**NNNN** - End of message  
**NOAA** - National Oceanic and Atmospheric Administration  
**NOPAC** - Northern Pacific  
**NPRS** - Nonpersistent  
**NR** - Near  
**NRBY** - Nearby

**T**  
**T** - Thunder  
**TCNTL** - Transcontinental  
**TCU** - Towering cumulus  
**TDA** - Today  
**TEMP** - Temperature  
**THD** - Thunderhead  
**THDR** - Thunder  
**THK** - Thick  
**THKNG** - Thickening  
**THKNS** - Thickness  
**THKR** - Thicker  
**THKST** - Thickest  
**THN** - Thin  
**THNG** - Thinning  
**THNR** - Thinner  
**THNST** - Thinnest  
**THR** - Threshold  
**THRFT** - Thereafter  
**THRU** - Through  
**THRUT** - Throughout  
**THSD** - Thousand  
**THTN** - Threaten  
**THTND** - Threatened  
**THTNG** - Threatening  
**THTNS** - Threatens  
**TIL** - Until  
**TMPRY** - Temporary  
**TMPRYLY** - Temporarily  
**TMW** - Tomorrow  
**TN** - Tennessee  
**TNDCY** - Tendency  
**TNDCYS** - Tendencies  
**TNGT** - Tonight  
**TNTV** - Tentative  
**TNTVLY** - Tentatively  
**TOPS** - Tops  
**TOVC** - Top of overcast  
**TPG** - Topping  
**TRBL** - Trouble  
**TRIB** - Tributary  
**TRKG** - Tracking  
**TRML** - Terminal  
**TRMT** - Terminate  
**TRMTD** - Terminated  
**TRMTG** - Terminating  
**TRMTS** - Terminates  
**TRNSP** - Transport  
**TRNSPG** - Transporting  
**TROF** - Trough  
**TROFS** - Troughs  
**TROP** - Tropopause  
**TRPCD** - Tropical continental  
**TRPCL** - Tropical  
**TRRN** - Terrain  
**TRSN** - Transition  
**TRW** - Thunderstorm  
**TRW+** - Thunderstorm with heavy rain shower  
**TSFR** - Transfer  
**TSFRD** - Transferred

**DFNT** - Definite  
**DFNTLY** - Definitely  
**DFRS** - Differs  
**DFUS** - Diffuse  
**DGNL** - Diagonal  
**DGNLLY** - Diagonally  
**DIGG** - Digging **DIR** - Direction  
**DISC** - Discontinue  
**DISCD** - Discontinued  
**DISCG** - Discontinuing  
**DISRE** - Disregard  
**DISRED** - Disregarded  
**DISREG** - Disregarding  
**DKTS** - Dakotas  
**DLA** - Delay  
**DLAD** - Delayed  
**DLT** - Delete  
**DLTD** - Deleted  
**DLTG** - Deleting  
**DLY** - Daily  
**DMG** - Damage  
**DMGD** - Damaged  
**DMGG** - Damaging  
**DMNT** - Dominant  
**DMSH** - Diminish  
**DMSHD** - Diminished  
**DMSHG** - Diminishing  
**DMSHS** - Diminishes  
**DNDFTS** - Downdrafts  
**DNS** - Dense  
**DNSLP** - Downslope  
**DNSTRM** - Downstream  
**DNWND** - Down wind  
**DP** - Deep  
**DPND** - Deepened  
**DPNS** - Deepens  
**DPR** - Deeper  
**DPNG** - Deepening  
**DPTH** - Depth  
**DRFT** - Drift  
**DRFTD** - Drifted  
**DRFTG** - Drifting  
**DRFTS** - Drifts  
**DRZL** - Drizzle  
**DSCNT** - Descent  
**DSIPT** - Dissipate  
**DSIPTD** - Dissipated  
**DSIPTG** - Dissipating  
**DSIPTN** - Dissipation  
**DSIPTS** - Dissipates  
**DSND** - Descend  
**DSNDG** - Descending  
**DSNDS** - Descends  
**DSNT** - Distant  
**DSTBLZ** - Destabilize  
**DSTBLZD** - Destabilized  
**DSTBLZG** - Destablizing  
**DSTBLZS** - Destablizes  
**DSTBLZN** - Destablization  
**DSTC** - Distance  
**DTRT** - Deteriorate

**NRLY** - Nearly  
**NRN** - Northern  
**NRW** - Narrow  
**NS** - Nova Scotia  
**NTFY** - Notify  
**NTFYD** - Notified  
**NV** - Nevada  
**NVA** - Negative vorticity advection  
**NW** - Northwest  
**NWD** - Northward  
**NWLY** - Northwesterly  
**NWRN** - Northwestern  
**NWS** - National Weather Service  
**NY** - New York  
**NXT** - Next

## O

**OAT** - Outside Air Temperature  
**OBND** - Outbound  
**OBS** - Observation  
**OBSC** - Obscure  
**OBSCD** - Obscured  
**OBSCG** - Obscuring  
**OCFNT** - Occluded front  
**OCLD** - Occlude  
**OCLDS** - Occludes  
**OCLDD** - Occluded  
**OCLDG** - Occluding  
**OCLN** - Occlusion  
**OCNL** - Occasional  
**OCNLY** - Occasionally  
**OCR** - Occur  
**OCRD** - Occurred  
**OCRG** - Occurring  
**OCRS** - Occurs  
**OFC** - Office  
**OPF** - Occluded frontal passage  
**OFSHR** - Offshore  
**OH** - Ohio  
**OK** - Oklahoma  
**OMTNS** - Over mountains  
**ONSHR** - On shore  
**OR** - Oregon  
**ORGPC** - Orographic  
**ORIG** - Original  
**OSV** - Ocean station vessel  
**OTLK** - Outlook  
**OTP** - On top  
**OTR** - Other  
**OTRW** - Otherwise  
**OUTFLO** - Outflow  
**OVC** - Overcast  
**OVNGT** - Overnight  
**OVR** - Over  
**OVRN** - Overrun  
**OVRNG** - Overrunning  
**OVRTK** - Overtake

**TSFRG** - Transferring  
**TSFRS** - Transfers  
**TSHWR** - Thundershower  
**TSHWRS** - Thundershowers  
**TSNT** - Transient  
**TSQLS** - Thundersqualls  
**TSTM** - Thunderstorm  
**TSTMS** - Thunderstorms  
**TS** - Thunderstorm with snow  
**TS+** - Thunderstorm with heavy snow  
**TSW** - Thunderstorm with snow showers  
**TSW+** - Thunderstorm with heavy snow showers  
**TURBC** - Turbulence  
**TURBT** - Turbulent  
**TWD** - Toward  
**TWDS** - Towards  
**TWI** - Twilight  
**TWRG** - Towering  
**TX** - Texas

## U

**UDDF** - Up and down drafts  
**UN** - Unable  
**UNAVBL** - Unavailable  
**UNEC** - Unnecessary  
**UNKN** - Unknown  
**UNL** - Unlimited  
**UNRELBL** - Unreliable  
**UNRSTD** - Unrestricted  
**UNSATFY** - Unsatisfactory  
**UNSBL** - Unseasonable  
**UNSTBL** - Unstable  
**UNSTDY** - Unsteady  
**UNSTL** - Unsettle  
**UNSTLD** - Unsettled  
**UNUSBL** - Unusable  
**UPDFTS** - Updrafts  
**UPR** - Upper  
**UPSLP** - Upslope  
**UPSTRM** - Upstream  
**URG** - Urgent  
**USBL** - Usable  
**UT** - Utah  
**UVV** - Upward vertical velocity  
**UVVS** - Upward vertical velocities  
**UWNDS** - Upper winds

## V

**VA** - Virginia  
**VARN** - Variation  
**VCNTY** - Vicinity  
**VCOT** - VFR conditions on top  
**VCTR** - Vector  
**VDUC** - VAS Data Utilization Center (NSSFC)  
**VFY** - Verify

**DTRTD** - Deteriorated  
**DTRTG** - Deteriorating  
**DTRTS** - Deteriorates  
**DURG** - During  
**DURN** - Duration  
**DVLP** - Develop  
**DVLPD** - Developed  
**DVLPG** - Developing  
**DVLPMT** - Development  
**DVLPS** - Develops  
**DVRG** - Diverge  
**DVRGG** - Diverging  
**DVRGNC** - Divergence  
**DVRGS** - Diverges  
**DVV** - Downward vertical velocity  
**DWNDFTS** - Downdrafts  
**DWPNT** - Dewpoint  
**DWPNTS** - Dewpoints  
**DX** - Duplex  
**E**  
  
**E - East**  
**EBND** - East bound  
**EFCT** - Effect  
**ELNGT** - Elongate  
**ELNGTD** - Elongated  
**ELSW** - Elsewhere  
**EMBDD** - Embedded  
**EMERG** - Emergency  
**ENCTR** - Encounter  
**ENDG** - Ending  
**ENE** - East-northeast  
**ENELY** - East-northeasterly  
**ENERN** - East-northeastern  
**ENEWD** - East-northeastward  
**ENHNC** - Enhance  
**ENHNCD** - Enhanced  
**ENHNCG** - Enhancing  
**ENHNCS** - Enhances  
**ENHNCMNT** - Enhancement  
**ENTR** - Entire  
**ERN** - Eastern  
**ERY** - Early  
**ERYR** - Earlier  
**ESE** - East-southeast  
**ESELY** - East-southeasterly  
**ESERN** - East-southeastern  
**ESEWD** - East-southeastward  
**ESNTL** - Essential  
**ESTAB** - Establish  
**ESTS** - Estimates  
**ETA** - Eta model  
**ETC** - Et cetera  
**ETIM** - Elapsed time  
**EVE** - Evening  
**EWD** - Eastward  
**EXCLV** - Exclusive  
**EXCLVLY** - Exclusively  
**FXCP** - Fxcent

**OVTK** - Overtake  
**OVTKG** - Overtaking  
**OVTKS** - Overtakes  
  
**P**  
**PA** - Pennsylvania  
**PAC** - Pacific  
**PBL** - Planetary boundary layer  
**PCPN** - Precipitation  
**PD** - Period  
**PDS** - Periods  
**PDMT** - Predominant  
**PEN** - Peninsula  
**PERM** - Permanent  
**PGTSND** - Puget Sound  
**PHYS** - Physical  
**PIBAL** - Pilot balloon observation  
**PIBALS** - Pilot balloon reports  
**PIREP** - Pilot weather report  
**PIREPS** - Pilot weather reports  
**PLNS** - Plains  
**PLS** - Please  
**PLTO** - Plateau  
**PM** - Post meridian  
**PNHDL** - Panhandle  
**POS** - Positive  
**POSLY** - Positively  
**PPINE** - PPI no echoes  
**PPSN** - Present position  
**PRBL** - Probable  
**PRBLY** - Probably  
**PRBLTY** - Probability  
**PRECD** - Precede  
**PRECDD** - Preceded  
**PRECDG** - Preceding  
**PRECDS** - Precedes  
**PRES** - Pressure  
**PRESFR** - Pressure falling rapidly  
**PRESRR** - Pressure rising rapidly  
**PRIM** - Primary  
**PRIN** - Principal  
**PRIND** - Present indications are  
**PRJMP** - Pressure jump  
**PROC** - Procedure  
**PROD** - Produce  
**PRODG** - Producing  
**PROG** - Forecast  
**PROGD** - Forecasted  
**PROGS** - Forecasts  
**PRSNT** - Present  
**PRSNTLY** - Presently  
**PRST** - Persist  
**PRSTS** - Persists  
**PRSTNC** - Persistence

**VFYD** - Verified  
**VFYG** - Verifying  
**VFYS** - Verifies  
**VLCTY** - Velocity  
**VLCTYS** - Velocities  
**VLNT** - Violent  
**VLNTLY** - Violently  
**VLY** - Valley  
**VLYS** - Valleys  
**VMC** - Visual meteorological conditions  
**VOL** - Volume  
**VORT** - Vorticity  
**VR** - Veer  
**VRG** - Veering  
**VRBL** - Variable  
**VRISL** - Vancouver Island, BC  
**VRS** - Veers  
**VRT MOTN** - Vertical Motion  
**VRY** - Very  
**VSBL** - Visible  
**VSBLY** - Visibility  
**VSBLYDR** - Visibility decreasing rapidly  
**VSBLYIR** - Visibility increasing rapidly  
**VT** - Vermont  
**VV** - Vertical velocity

**W**  
**W** - West  
**WA** - Washington  
**WAA** - Warm Air Advection  
**WBND** - West bound  
**WDLY** - Widely  
**WDSPRD** - Widespread  
**WEA** - Weather  
**WFO** - Weather Forecast Office  
**WFOS** - Weather Forecast Offices  
**WFP** - Warm front passage  
**WI** - Wisconsin  
**WIBIS** - Will be issued  
**WINT** - Winter  
**WK** - Weak  
**WKDAY** - Weekday  
**WKEND** - Weekend  
**WKNG** - Weakening  
**WKNS** - Weakens  
**WKR** - Weaker  
**WKST** - Weakest  
**WKN** - Weaken  
**WL** - Will  
**WLY** - Westerly  
**WND** - Wind  
**WNDS** - Winds  
**WNW** - West-northwest  
**WNWLY** - West-northwesterly  
**WNWRN** - West-northwestern

**EXPC** - Expect  
**EXPCD** - Expected  
**EXPCG** - Expecting  
**EXTD** - Extend  
**EXTDD** - Extended  
**EXTDG** - Extending  
**EXTDS** - Extends  
**EXTN** - Extension  
**EXTRAP** - Extrapolate  
**EXTRAPD** - Extrapolated  
**EXTRM** - Extreme  
**EXTRMLY** - Extremely  
**EXTSV** - Extensive

## F

**F** - Farenheit  
**FA** - Aviation area forecast  
**FAH** - Farenheit  
**FAM** - Familiar  
**FCST** - Forecast  
**FCSTD** - Forecasted  
**FCSTG** - Forecasting  
**FCSTR** - Forecaster  
**FCSTS** - Forecasts  
**FIG** - Figure  
**FILG** - Filling  
**FIRAV** - First available  
**FL** - Florida  
**FLG** - Falling  
**FLRY** - Flurry  
**FLRYS** - Flurries  
**FLT** - Flight  
**FLW** - Follow  
**FLWG** - Following  
**FM** - From  
**FMT** - Format  
**FNCTN** - Function  
**FNT** - Front  
**FNTL** - Frontal  
**FNTS** - Fronts  
**FNTGNS** - Frontogenesis  
**FNTLYS** - Frontolysis  
**FORNN** - Forenoon  
**FPM** - Feet per minute  
**FQT** - Frequent  
**FQTLY** - Frequently  
**FRM** - Form  
**FRMG** - Forming

**FRMN** - Formation  
**FROPA** - Frontal passage  
**FROSFC** - Frontal surface  
**FRST** - Frost  
**FRWF** - Forecast wind factor  
**FRZ** - Freeze  
**FRZN** - Frozen  
**FRZG** - Freezing  
**FT** - Feet  
**FT** - Terminal forecast  
**FTHR** - Further

**PRSTNT** - Persistent  
**PRVD** - Provide  
**PRVDD** - Provided  
**PRVDG** - Providing  
**PRVDS** - Provides  
**PS** - Plus  
**PSBL** - Possible  
**PSBLY** - Possibly  
**PSBLTY** - Possibility  
**PSG** - Passage  
**PSN** - Position  
**PSND** - Positioned  
**PTCHY** - Patchy  
**PTLY** - Partly  
**PTNL** - Potential  
**PTNLY** - Potentially  
**PTNS** - Portions  
**PUGET** - Puget Sound  
**PVA** - Positive vorticity advection  
**PVL** - Prevail  
**PVLD** - Prevailed  
**PVLG** - Prevailing  
**PVLS** - Prevails  
**PVLT** - Prevalent  
**PWR** - Power

## Q

**QN** - Question  
**QPFERD** - NMC excessive rainfall discussion  
**QPFHSD** - NMC heavy snow discussion  
**QPFSPD** - NMC special precipitation discussion  
**QSTNRY** - Quasistationary  
**QUAD** - Quadrant  
**QUE** - Quebec

## R

**R** - Rain  
**RADAT** - Radiosonde observation data  
**RAOB** - Radiosonde observation  
**RAOBS** - Radiosonde observations  
**RCH** - Reach  
**RCHD** - Reached  
**RCHG** - Reaching  
**RCHS** - Reaches  
**RCKY** - Rocky  
**RCKYS** - Rockies  
**RCMD** - Recommend  
**RCMDD** - Recommended  
**RCMDG** - Recommending  
**RCMDS** - Recommends  
**RCRD** - Record  
**RCRDS** - Records

**WNWWD** - West-northwestward  
**WO** - Without  
**WPLTO** - Western Plateau  
**WRM** - Warm  
**WRMG** - Warming  
**WRN** - Western  
**WRMR** - Warmer  
**WRMST** - Warmest  
**WRMFNT** - Warm front  
**WRMFNTL** - Warm Frontal  
**WRNG** - Warning  
**WRNGS** - Warnings  
**WRS** - Worse  
**WSHFT** - Wind shift  
**WSHFTS** - Wind Shifts  
**WSFO** - Weather Service Forecast Office  
**WSFOS** - Weather Service Forecast Offices  
**WSO** - Weather Service Office  
**WSOS** - Weather Service Offices  
**WSTCH** - Wasatch Range  
**WSW** - West-southwest  
**WSWLY** - West-southwesterly  
**WSWRN** - West-southwestern  
**WSWWD** - West-southwestward  
**WTR** - Water  
**WTRS** - Waters  
**WTSPT** - Waterspout  
**WTSPTS** - Waterspouts  
**WUD** - Would  
**WV** - West Virginia  
**WVS** - Waves  
**WW** - Severe Weather Watch  
**WWAMKC** - Status Report  
**WWD** - Westward  
**WWS** - Severe Weather Watches  
**WX** - Weather  
**WY** - Wyoming

## X

**XCP** - Except  
**XPC** - Expect  
**XPCD** - Expected  
**XPCG** - Expecting  
**XPCS** - Expects  
**XPLOS** - Explosive  
**XTND** - Extend  
**XTNDD** - Extended  
**XTNDG** - Extending  
**XTRM** - Extreme  
**XTRMLY** - Extremely

## Y

**YDA** - Yesterday  
**YKN** - Yukon

**FVRBL** - Favorable  
**FWD** - Forward  
**FYI** - For your information

**G**

**G** - Gust  
**GA** - Georgia  
**GEN** - General  
**GENLY** - Generally  
**GEO** - Geographic

**RCV** - Receive  
**RCVD** - Received  
**RCVG** - Receiving  
**RCVS** - Receives  
**RDC** - Reduce  
**RDGG** - Ridging  
**RDR** - Radar  
**RDVLP** - Redevelop  
**RDVLPG** - Redeveloping  
**RDVLPMT** - Redevelopment  
**RE** - Regard  
**RECON** - Reconnaissance  
**REF** - Reference  
**RES** - Reserve  
**RGL** - Regional Model  
**RGT** - Right  
**RHINO** - RHI not operative  
**RI** - Rhode Island

**YLSTN** - Yellowstone

**Z**

**ZL** - Freezing drizzle  
**ZN** - Zone  
**ZNS** - Zones  
**ZR** - Freezing rain

## Abbreviations Used in Aviation

ABV - above	MFD - multi-function display
AC - Advisory Circular	MEI - multi engine instructor
ACFT - Aircraft	MEL - minimum equipment list (91.213)
AD - Airworthiness Directive	METAR - meteorological aerodrome report
ADI - attitude direction indicator	MH - magnetic heading
ADF - automatic direction finder	MHZ - megahertz
ADIZ - air defense identification zone	MIRL - medium intensity runway lights
A/FD - Airport/Facility Directory	MM - ILS middle marker
AFM - Airplane Flight Manual	MOA - military operations area
AFSS - Automated Flight Service Station	MOCA - minimum obstruction clearance altitude
AGI - Advanced Ground Instructor	MP - manifold pressure
AGL - above ground level	MPH - miles per hour
AIM - Aeronautical Information Manual	MRA - minimum reception altitude
AIRMET - Airman's Meteorological Info	MSA - minimum safe altitude
ALS - approach light system	MSL - mean sea level
ALSF-1 - standard 2400' high-intensity approach lighting system with sequenced flashers (Category I configuration)	MTR - military training route (see IR, VR)
ALSF-2 - standard 2400' high-intensity approach lighting system with sequenced flashers (Category II configuration)	MVA - minimum vectoring altitude
AME - aviation medical examiner	NA - not authorized
AMEL/S - airplane multi-engine land/sea	NACO - National Aeronautical Charting Office (FAA)
AOA - angle of attack	NAVAID - navigational aid, NDB, VOR, etc
AOE - airport of entry	NDB(ADF) - nondirectional beacon (automatic direction finder)
A&P - Airframe & Powerplant	NDH - no damage history
APCH - approach	NCFT - non federal control tower
APU - auxiliary power unit	NM - nautical mile
ARTC - air route traffic control	NOAA - National Oceanic and Atmospheric Administration
ARTCC - Air Route Traffic Control Center	NOPT - no procedure turn required or authorized
ASL - above sea level (Canada)	NORDO - no radio
ASOS - Automated Surface Observing System	NOTAM - notice to airman
ASR - airport surveillance radar	NPRM - notice of proposed rulemaking
ASRS - Aviation Safety Reporting System	NTSB - National Transportation Safety Board
A/T - auto throttle	NWS - National Weather Service
ATA - actual time of arrival	OAT - outside air temperature
ATC - air traffic control	OBS - omni-bearing selector
ATE - actual time enroute	OEI - one engine inoperative
ATIS - Automatic Terminal Info Service	OM - ILS outer marker
ATP - Airline Transport Pilot	OROCA - off route obstruction clearance altitude
AWOS - Automatic Weather Observing System	OTS - out of service
BFR - Biennial Flight Review	PAR - precision approach radar
BHP - Brake Horsepower	PCL - pilot controlled lighting
C - Celsius	PF - pilot flying
CAS - calibrated airspeed	PFD - primary flight display
CAT II - Category II	PIC - pilot in command
CAVU - Ceiling and visibility unlimited	PIREP - Pilot weather report
CDI - Course Deviation Indicator	PM - pilot monitoring
CFI - Certificated Flight Instructor	PNF - pilot not flying
CFIT - controlled flight into terrain	POH - pilot's operating handbook
CFR - Code of Federal Regulations	PSI - pounds per square inch
CG - center of gravity	PT - procedure turn
CHT - cylinder head temperature	PTS - practical test standards
CO - carbon monoxide CO2 carbon dioxide	RAIL - runway alignment indicator light system
CONSOL or CONSOLAN - a low or medium frequency long range navigational aid	RAIM - receiver autonomous integrity monitoring (GPS)
	RB - relative bearing
	RBN - radio beacon
	RCI M - runway centerline marking

CONUS - Continental U.S.  
 COP - change over point  
 CRM - crew resource management  
 CTAF - common traffic advisory frequency  
 CVR - cockpit voice recorder  
 CWA - center weather advisory  
 DA - density altitude  
 DALR - dry adiabatic lapse rate  
 DF/Steer - direction finding/steering  
 DG - directional gyro, heading indicator  
 DH - decision height  
 DME - distance measuring equipment compatible with TACAN  
 DOT - Department of Transportation  
 DUAT(S) - Direct User Access Terminal (System)  
 DVFR - defense VFR  
 EAS - equivalent airspeed  
 EFAS - enroute flight advisory service  
 EFIS - electronic flight instrument system  
 EFC - expect further clearance  
 EGT - exhaust gas temperature  
 ELT - emergency locator transmitter  
 ETA - estimated time of arrival  
 ETE - estimated time enroute  
 F - Fahrenheit  
 FA - area forecast report  
 FAA - Federal Aviation Administration  
 FAF - final approach fix  
 FAR - Federal Aviation Regulation  
 FBO - fixed base operator  
 FCC - Federal Communications Commission  
 FD - winds aloft report  
 FDC - Flight Data Center (FAA)  
 FDR - flight data recorder  
 FE - flight engineer  
 FL - flight level  
 FM - fan marker  
 FMS - flight management system  
 FO - first officer  
 FOD - foreign object debris  
 FPM - feet per minute  
 FSDO - Flight Standards District Office (FAA)  
 FSS - flight service station  
 FYI - For your information  
 G - gravitational force  
 GA - general aviation  
 GMT - Greenwich Mean Time  
 GP - glide path/ GS slope  
 GPH - gallons per hour  
 GPS - global positioning system  
 GPU - ground power unit  
 GPWS - ground proximity warning system  
 HAA - height above airport  
 HAT - height above threshold  
 HF - high frequency  
 HIRL - high-intensity runway light system  
 HIWAS - Hazardous In-Flight Weather Advisory Service  
 RCLS - runway centerline light system  
 RCO - remote communications outlet  
 REIL - runway end identification lights  
 RMK - remark  
 RMI - radio magnetic indicator  
 RNP - required navigational performance  
 RPM - rotations per minute  
 RR - low or medium frequency radio range station  
 RV - radar vector  
 RVR - runway visual range as measured in the touchdown zone area  
 RVSM - reduced vertical separation minimum  
 SALR - saturated adiabatic lapse rate  
 SALS - short approach light system  
 SALSF - SALS with sequenced flashing lights  
 SAR - search and rescue  
 SDF - simplified directional facility  
 SIC - second in command  
 SIGMET - significant meteorological information  
 SLP - sea level pressure  
 SM - statute mile  
 SMOH - since major overhaul  
 SODA - statement of demonstrated ability  
 SOP - Standard operating procedure  
 SPOH - since prop overhaul  
 SSALS - simplified short approach light system.  
 SSALSR - simplified short approach light system with runway alignment indicator lights  
 STAR - standard terminal arrival route  
 STOL - short take off & landing  
 SUA - special use airspace  
 SVFR - special VFR  
 TACAN - tactical air navigational aid, a UHF military nav aid  
 TAF - terminal aerodrome forecast  
 TAS - true airspeed  
 TBO - time between overhaul  
 TC - true course  
 TCAS - traffic alert & collision avoidance system  
 TCH - threshold crossing height  
 TDZE - touchdown zone elevation  
 TDZL - touchdown zone lights  
 TFR - temporary flight restriction  
 TH - true heading  
 TPA - traffic pattern altitude  
 TRACON - terminal radar approach control  
 TRSA - terminal radar service area  
 TSO - technical standard order  
 TTSN - total time since new  
 TVOR - terminal VHF omnirange station  
 TX - transmit or transponder  
 UHF - ultra-high frequency  
 UTC - universal coordinated time  
 V Speeds  
 VASI - visual approach slope indicator  
 VDP - visual descent point  
 VFR - visual flight rules  
 VHF - very high frequency  
 VMC - Visual meteorological conditions  
 VNAV - vertical navigation  
 VOR - VHF omnirange station

HP - horsepower  
HSI - horizontal situation indicator  
HUD - heads-up display  
IAF - initial approach fix  
IAP - instrument approach procedure  
IAS - indicated airspeed  
ICAO - International Civil Aviation Organization.  
IFR - instrument flight rules  
IGI - Instrument Ground Instructor  
ILS - instrument landing system  
IM - ILS inner marker  
IMC - instrument meteorological conditions  
INOP - inoperative  
INS - inertial navigation system  
INT - intersection  
ISA - International Standard Atmosphere  
IR - military training route - instrument  
KIAS - Knots, Indicated Airspeed  
KHZ - kilohertz  
LAA - local airport advisory  
LAAS - local area augmentation system (GPS)  
LAHSO - land & hold short operations  
LAT - latitude  
LBS - pounds  
LDA - localizer-type directional aid  
LF - low frequency  
LFR - low-frequency radio range  
LLWS - low level wind shear  
LLWAS - low level windshear alert system  
LLZ - localizer  
LMM - compass locator at middle marker  
LNAV - lateral navigation  
LOC - localizer  
LOM - compass locator at outer marker  
LONG - longitude  
LOP - line of position  
LORAN - long range radio aid to navigation  
M - mach number  
MAA - maximum authorized IFR altitude.  
MALS - medium intensity approach light system.  
MALSR - medium intensity approach light system with runway alignment indicator lights  
MAP - missed approach point  
MB - magnetic bearing  
MCA - minimum crossing altitude  
MDA - minimum descent altitude  
MEA - minimum en route IFR altitude

VORTAC - co-located VOR and TACAN  
VR - military training route - VFR  
VSI - vertical speed indicator  
VV - vertical visibility  
WA - airmet  
WAAS - wide area augmentation system (GPS)  
WAC - world aeronautical chart  
WH - hurricane advisory  
WPT - waypoint  
WS - sigmet  
WST - convective sigmet  
WW - Severe Weather Watch  
Z - zulu time

#### Colors:

A - Amber  
Be - Beige  
Bk - Black  
B - Blue  
Br - Brown  
Gd - Gold  
Gy - Gray  
G - Green  
O - Orange  
P - Purple  
R - Red  
S - Silver  
T - Tan  
V - Violet  
W - White  
Y - Yellow

#### Definition

- "Shall" is used in an imperative sense;
- "May" is used in a permissive sense to state authority or permission to do the act prescribed, and the words
- "no person may \* \* \*" or "a person may not \* \* \*" mean that no person is required, authorized, or permitted to do the act prescribed
- "Includes" - "includes but is not limited to"